

05/12/2023

Installation Proxmox

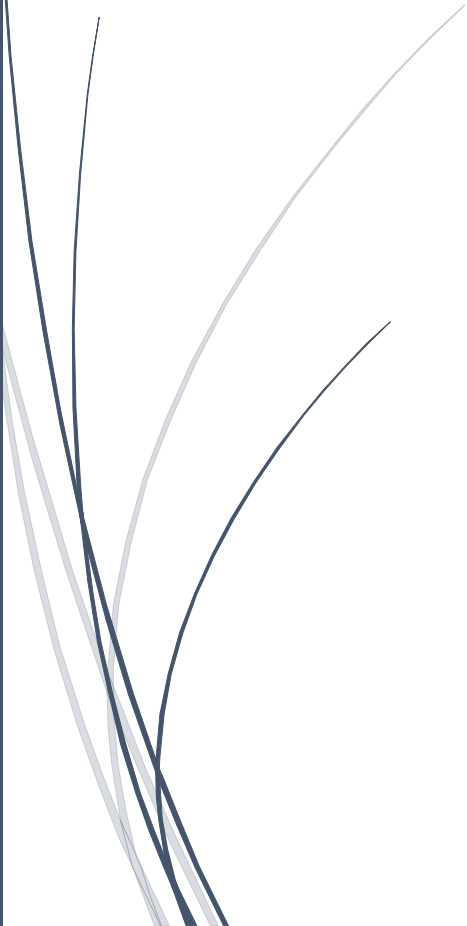


Table des matières

Introduction

Prérequis

Installation

Introduction

Proxmox VE (Virtual Environment) est un type de **solution bare metal** (métal nu – c'est-à-dire directement opérationnel sur la machine) **open source**, basé sur la distribution Debian Linux (également appelé hyperviseur ou **Virtual Machine Monitor** (VMM)) pour la **virtualisation de serveurs**.

C'est une **solution complète** et **open source** de **management de virtualisation de serveurs**. Cela signifie que Proxmox permet à un utilisateur d'**installer différents systèmes d'exploitation** (Windows, Linux, Unix, etc.) sur **un seul ordinateur** ou **un cluster de machines** construit en regroupant plusieurs ordinateurs.

L'outil propose une **interface Web**, accessible après l'installation sur votre serveur. Cette interface **facilite la gestion de la machine virtuelle**, puisque généralement, quelques clics suffisent.

Prérequis

Au niveau de la configuration matérielle de la machine physique, il est indispensable d'avoir un processeur qui supporte la virtualisation (*processeur 64 bits avec traduction d'adresse de second niveau (SLAT)*). Pour le nombre de cœurs, le minimum c'est 2 cœurs, mais disons que la recommandation c'est plutôt 4 cœurs.

- **RAM**

Le strict minimum, c'est 2 Go de RAM, mais vous n'allez pas pouvoir faire grand-chose. Si vous souhaitez faire une ou deux VM sous [Linux](#), vous devez partir sur 4 Go.

- **Stockage**

Pour le stockage, je vous recommande 128 Go en SSD pour le système et un second espace de stockage dédié pour les machines virtuelles et les images ISO.

Dans un premier temps il sera nécessaire de **recupérer le média d'installation (ISO)** pour créer une clé USB bootable afin d'installer Proxmox sur notre serveur.

Pour cela, la méthode la plus sécurisée est de se rendre directement sur le site de l'éditeur afin de s'appuyer sur une source sûre.

- [Télécharger Proxmox VE](#)

Cliquez sur "**Proxmox VE 7.0 ISO Installer**" pour télécharger l'ISO. Ensuite, créez la clé USB bootable avec un utilitaire. Je vous recommande d'utiliser Rufus : il suffira de sélectionner votre clé USB et le fichier ISO.

Attention : la clé USB sera formatée alors pensez à sauvegarder vos données.

- [Télécharger Rufus](#)

Installation

Cliquer sur Install Proxmox VE





END USER LICENSE AGREEMENT (EULA)

END USER LICENSE AGREEMENT (EULA) FOR PROXMOX VIRTUAL ENVIRONMENT (PROXMOX VE)

By using Proxmox VE software you agree that you accept this EULA, and that you have read and understand the terms and conditions. This also applies for individuals acting on behalf of entities. This EULA does not provide any rights to Support Subscriptions Services as software maintenance, updates and support. Please review the Support Subscriptions Agreements for these terms and conditions. The EULA applies to any version of Proxmox VE and any related update, source code and structure (the Programs), regardless of the the delivery mechanism.

1. License. Proxmox Server Solutions GmbH (Proxmox) grants to you a perpetual, worldwide license to the Programs pursuant to the GNU Affero General Public License V3. The license agreement for each component is located in the software component's source code and permits you to run, copy, modify, and redistribute the software component (certain obligations in some cases), both in source code and binary code forms, with the exception of certain binary only firmware components and the Proxmox images (e.g. Proxmox logo). The license rights for the binary only firmware components are located within the components. This EULA pertains solely to the Programs and does not limit your rights under, or grant you rights that supersede, the license terms of any particular component.

2. Limited Warranty. The Programs and the components are provided and licensed "as is" without warranty of any kind, expressed or implied, including the implied warranties of merchantability, non-infringement or fitness for a particular purpose. Neither Proxmox nor its affiliates warrants that the functions contained in the Programs will meet your requirements or that the operation of the Programs will be entirely error free, appear or perform precisely as described in the accompanying documentation, or comply with regulatory requirements.

3. Limitation of Liability. To the maximum extent permitted under applicable law, under no

Abort

Previous

I agree



Proxmox Virtualization Environment (PVE)

The Proxmox Installer automatically partitions your hard disk. It installs all required packages and finally makes the system bootable from hard disk. All existing partitions and data will be lost.

Press the Next button to continue installation.

- **Please verify the installation target**
The displayed hard disk is used for installation. Warning: All existing partitions and data will be lost.
- **Automatic hardware detection**
The installer automatically configures your hardware.
- **Graphical user interface**
Final configuration will be done on the graphical user interface via a web browser.

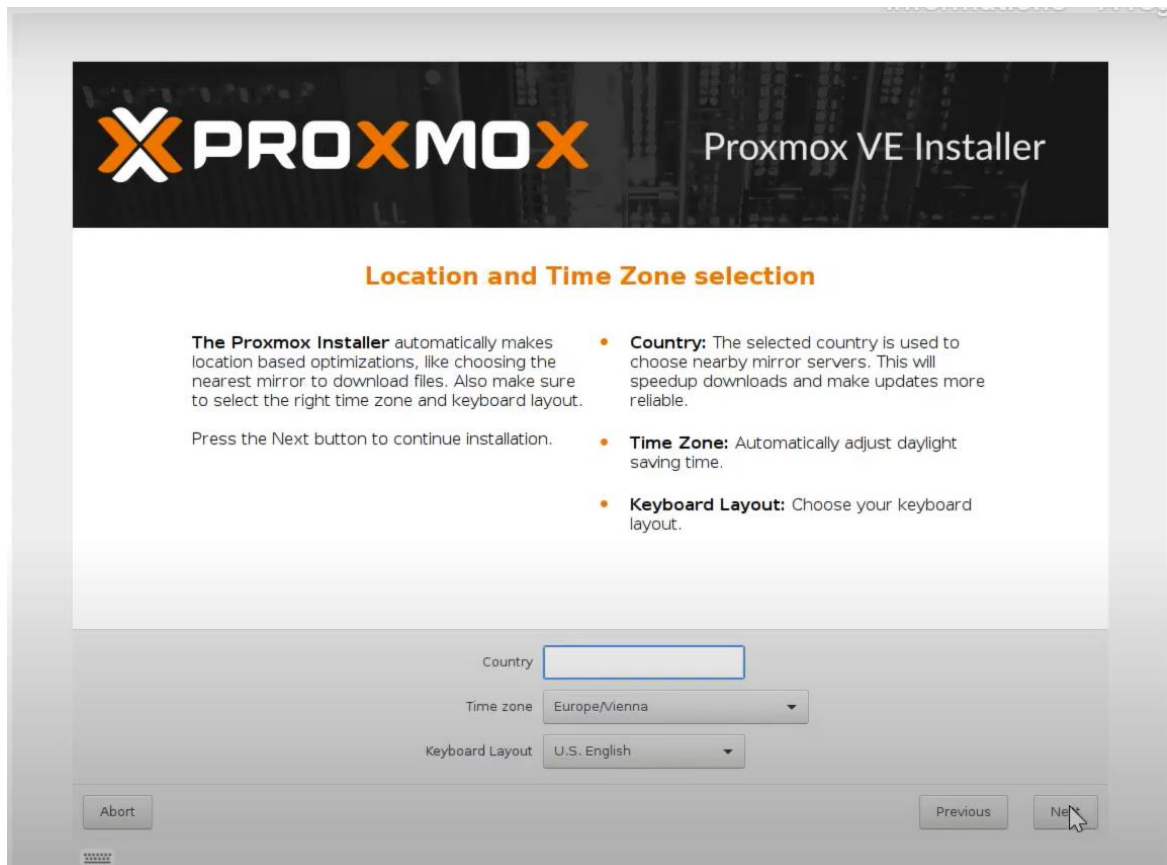
Target Harddisk: /dev/sdd (476GB, Samsung SSD 850)

Options

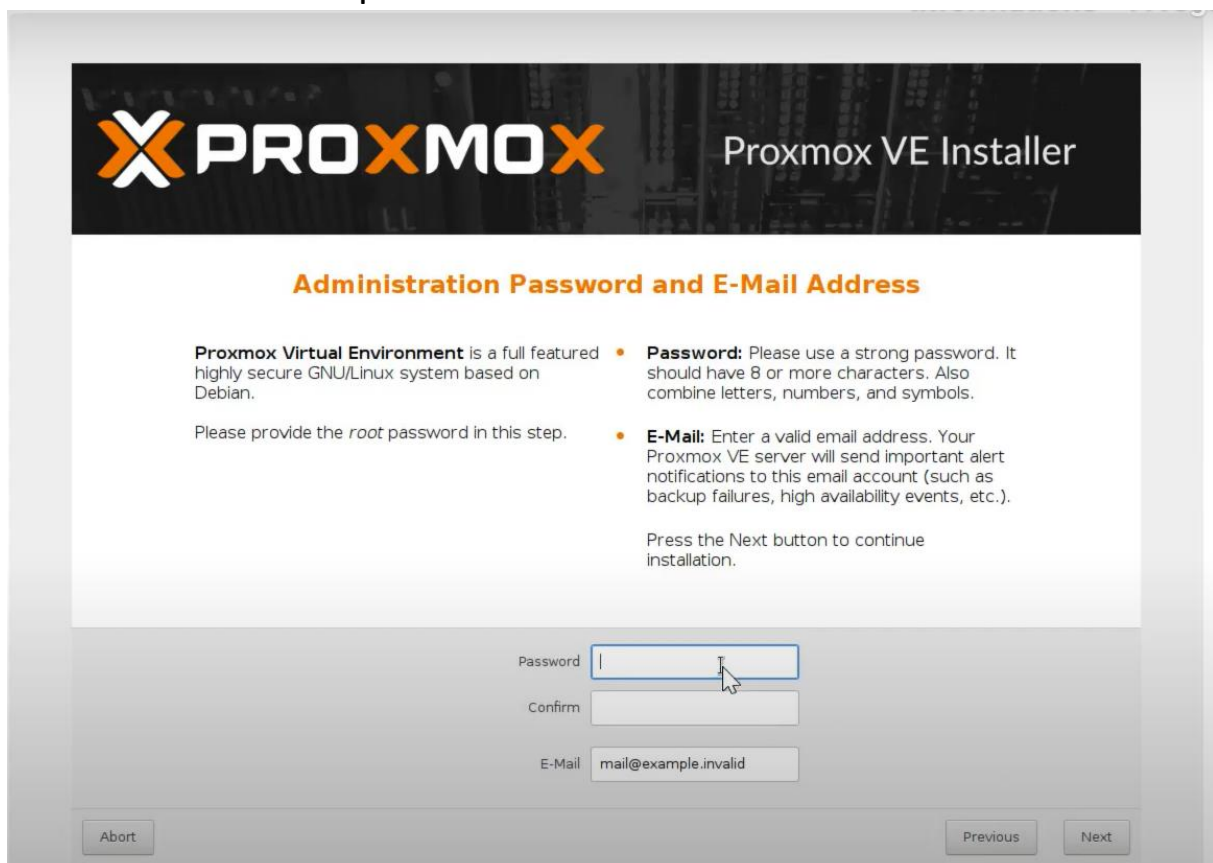
Abort

Previous

Next



Entrer votre mot de passe





Management Network Configuration

Please verify the displayed network configuration. You will need a valid network configuration to access the management interface after installation.

Afterwards press the Next button. You will be shown a list of the options that you chose during the previous steps.

- **IP address:** Set the IP address for your server.
- **Netmask:** Set the netmask of your network.
- **Gateway:** IP address of your gateway or firewall.
- **DNS Server:** IP address of your DNS server.

Management Interface: eno3 - ac:1f6b:12:32:02 (ixgbe) ▼

Hostname (FQDN): pve.example.invalid

IP Address: 192.168.100.2

Netmask: 255.255.255.0

Gateway: 192.168.100.1

DNS Server: 127.0.0.1

Abort

Previous

Next



Summary

Please verify the displayed informations.

Afterwards press the **Install** button. The installer will begin to partition your drive and extract the required files.

Option	Value
Filesystem:	ext4
Disk(s):	/dev/sdd
Country:	Switzerland
Timezone:	Europe/Zurich
Keymap:	fr-ch
E-Mail:	mail@example.test
Management Interface:	eno3
Hostname:	pve
IP:	10.0.0.243
Netmask:	255.255.255.0
Gateway:	10.0.0.1
DNS:	10.0.0.1

Abort

Previous

Install

